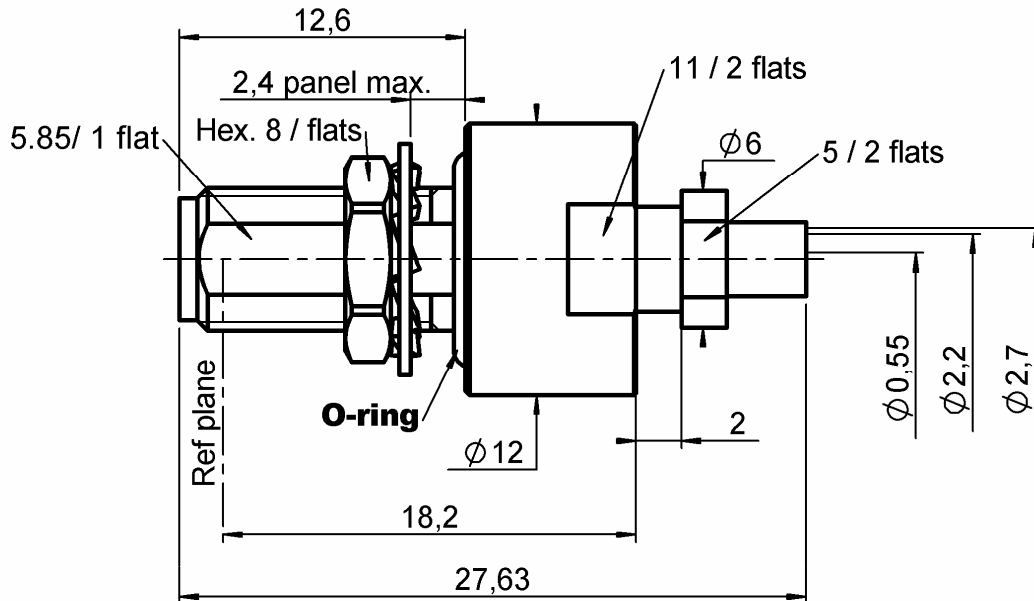


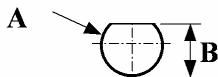
STRAIGHT BULKHEAD JACK PANEL SEAL
SOLDER TYPE CABLE SHF2.4M

R127.821.L01

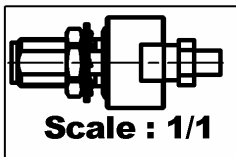
Series : SMA2.9



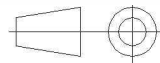
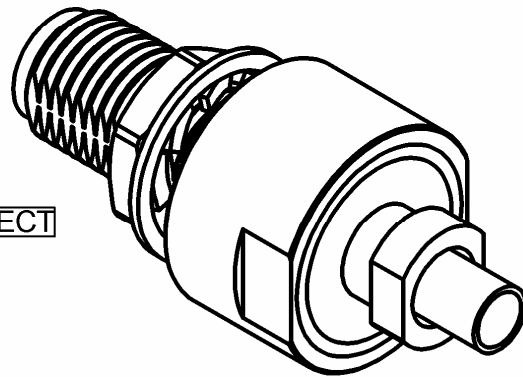
PANEL CUT OUT



mm		
	Maxi	mini
A	6.5	6.4
B	6.05	5.95



MAT ASPECT



All dimensions are in mm.

COMPONENTS	MATERIALS	PLATING (µm)
BODY	STAINLESS STEEL (316L)	PASSIVATED .
CENTER CONTACT	BERYLLIUM COPPER, BRASS	GOLD 1.3 OVER NICKEL 2
OUTER CONTACT	BRASS	GOLD 1.3 OVER NICKEL 2
INSULATOR	ULTEM+PTFE	
GASKET	FLUOROSILICON	
OTHERS PARTS	ST. STEEL (316L) , BRASS	GOLD , PASSIVATED
-	-	-
-	-	-

Issue : 0616 A

In the effort to improve our products, we reserve the right to make changes judged to be necessary.



STRAIGHT BULKHEAD JACK PANEL SEAL

R127.821.L01

SOLDER TYPE CABLE SHF2.4M

Series : SMA2.9

PACKAGING

Standard	Unit	Other
1	-	Contact us

SPECIFICATION

ELECTRICAL CHARACTERISTICS

Impedance		50 Ω
Frequency		0-40 GHz
VSWR	1.15 +	0,0000 x F(GHz) Maxi
Insertion loss		0.1 √F(GHz) dB Maxi
RF leakage	- (90 - F(GHz)) dB Maxi
Voltage rating		335 Veff Maxi
Dielectric withstanding voltage		1000 Veff mini
Insulation resistance		5000 MΩ mini

CABLE ASSEMBLY

Stripping	a	b	c	d	e	f
mm	20,0	2,50	0,00	0,00	0,00	0,00

Assembly instruction :

Recommended cable(s)
SHF 2.4M

Characteristics indicated on this data sheet are those that can be achieved with the highest performance cable. Intrinsic limitations of the cable may diminish the performance of the assembly

Cable retention

- pull off * N mini
- torque NA N.cm

MECHANICAL CHARACTERISTICS

Center contact retention		
Axial force – Mating end	27	N mini
Axial force – Opposite end	27	N mini
Torque	NA	N.cm mini

TOOLING

Part Number	Description	Hexagon
.	.	.

Recommended torque		
Mating	NA	N.cm
Panel nut	200	N.cm
Clamp nut	350	N.cm
A/F clamp nut	5,0000	mm

Mating life	500	Cycles mini
Weight	9,3680	g

OTHER CHARACTERISTICS

*See the TDS of the cable assembly

ENVIRONMENTAL

Operating temperature	-65/+165	° C
Hermetic seal	NA	Atm.cm3/s
Panel leakage	IP67	

Issue : 0616 A

In the effort to improve our products, we reserve the right to make changes judged to be necessary.



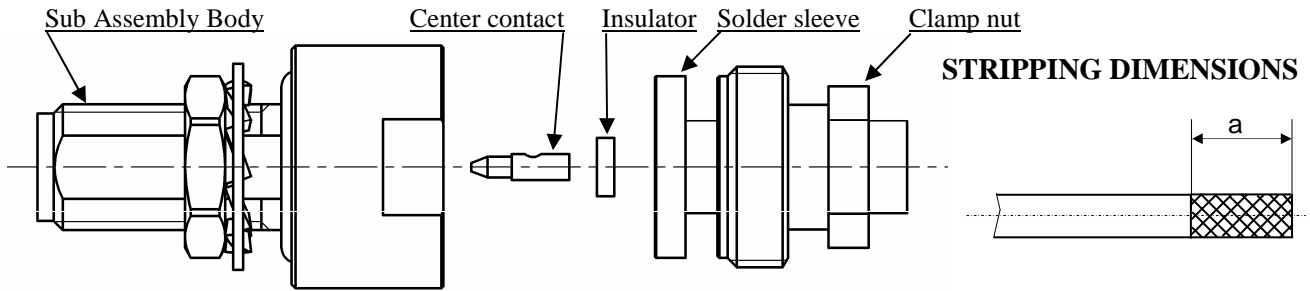
STRAIGHT BULKHEAD JACK PANEL SEAL

R127.821.L01

SOLDER TYPE CABLE SHF2.4M

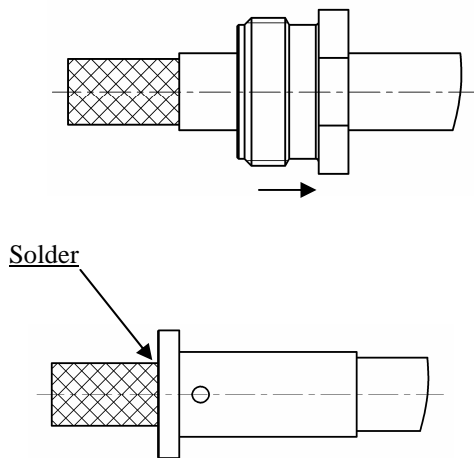
Series : SMA2.9

COMPONENTS



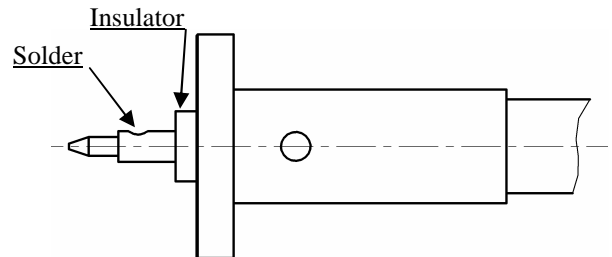
1

Strip the cable.
Slide the clamp nut onto the cable.
Solder the ferrule onto the braid of the cable.



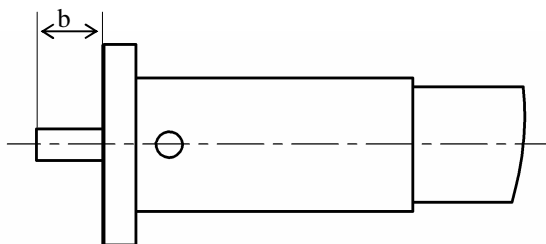
3

Slide the center contact onto the cable inserting between contact and ferrule the insulator.
Solder the contact onto the inner conductor.



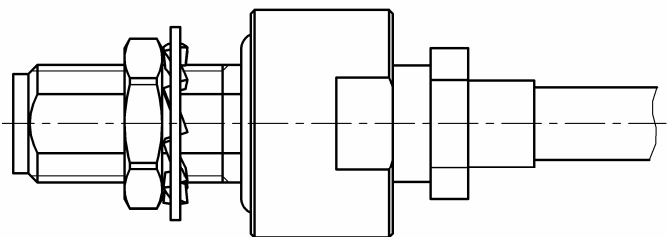
2

Cut the excess of braid and dielectric leveled on the sleeve.



4

Mount the whole body into the main sub assembly and screw the solder sleeve.
(recommended coupling torque 350 N/cm)



Issue : 0616 A

In the effort to improve our products, we reserve the right to make changes judged to be necessary.



RADIALL®